

Gas nailer

FORCE ONE

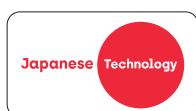


**The best gas nailer in its class
- with extensive range of accessories**

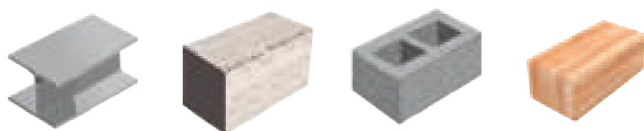


Gas nailer FORCE ONE

Advantages, approvals and certificates



Suitable building materials



Versatile use in different base materials such as steel, concrete, solid bricks and limited in wood. Can be used on floors, walls and ceilings.

Applications

Electrical Installations

Fastening of various light electrical installations [cables, conduits, cable channels, lamp suspensions etc.]

HVAC sector

Fixing of heating pipes, ventilation channels etc.

Drywall construction

Fastening of drywall profiles

On the façade / tunnel construction / motorways

Fastening of insulating mats, moisture-repellent foils, protective material for floor coverings, fleece

Technical data of gas nailer FORCE ONE

	Technical data
Height	365 mm
Width	124 mm
Length	334 mm
Weight	3.6 Kg (with battery included)
Loading capacity	FORCE ONE 20: 20 + 2 nails* FORCE ONE 40: 40 + 2 nails*
Type of battery	NiMH-battery (battery lasts for 4.500 nails)
Capacity of battery	6V DC, 1.5Ah
Power consumption (Rated output)	8VA (10V 800mA)
Connection charger	100-240V AC. (50 or 60Hz)
Charging time	max. 120 minutes
Temperature range for use	-10°C to +40°C

* There must be at least 2 nails in the magazine, otherwise the nailer cannot be triggered.



Main features / Advantages



Powerful

Setting energy of 105 Joule for high fastening quality [steel thickness up to +5 mm]



Constant power

Consistent gas injection regardless of temperature



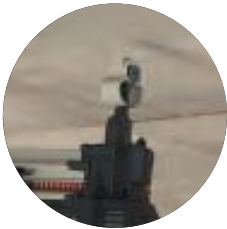
Long lasting battery

up to 4500 fastenings per charge



Versatile

nails from 13 to 38 mm length for many different applications



Short contact pressure

enables fatigue-free working, especially with overhead installation



Quick

up to 2.5 nails per second



Good accessibility

even in narrow places due to the slim design and the extended nose



3,6 kg

Lightweight

with only 3,6 kg including battery the FORCE ONE is the lightest gas nailer in its class



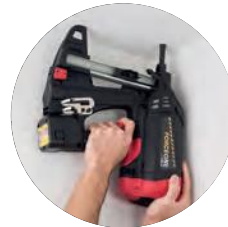
Highly effective dust protection

Clever filter systems at the suction and discharge openings



Ergonomic handle

relieves the hands during longer use



Very well balanced

due to the special positioning of the gas cartridge



Smart

Computer-controlled intelligent ventilator adapts to the environment



Simple and fast adjustable tool nose



Removable

magazine footer



Laterally adjustable

device hook



LED display

prevents unexpected work interruptions in case the battery is low

Set includes

- 1 x Gas nailer FORCE ONE
- 1 x Safety glasses
- 2 x Ear plugs
- 2 x Battery
- 1 x Charger
- 1 x Carrying case
- 1 x Jam clear tool
- 1 x Instruction manual



FORCE ONE



2x Battery



1x Jam clear tool



1x Charger



Gas nailer FORCE ONE

Type	Art-No	€/1 pc	[Set]	[pcs]
FORCE ONE with magazine for 20 nails	FONE20		1	–
FORCE ONE with magazine for 40 nails	FONE40		1	–



Battery and charger for gas nailer FORCE ONE

Type	Art-No	€/1 pc	[pcs]	[pcs]
FORCE ONE Battery	FONEBAT		1	–
FORCE ONE Charger	FONECAR		1	–



High-performance gas for gas nailer FORCE ONE

Type	Art-No	Height [mm]	Content [ml]	€/1 pc	[pcs]	[pcs]
Fuel cell*	9GASFONE	180	80		1	20

* sufficient for min. 800 nails



Steel nails FORCE ONE XHA & TKA

Advantages

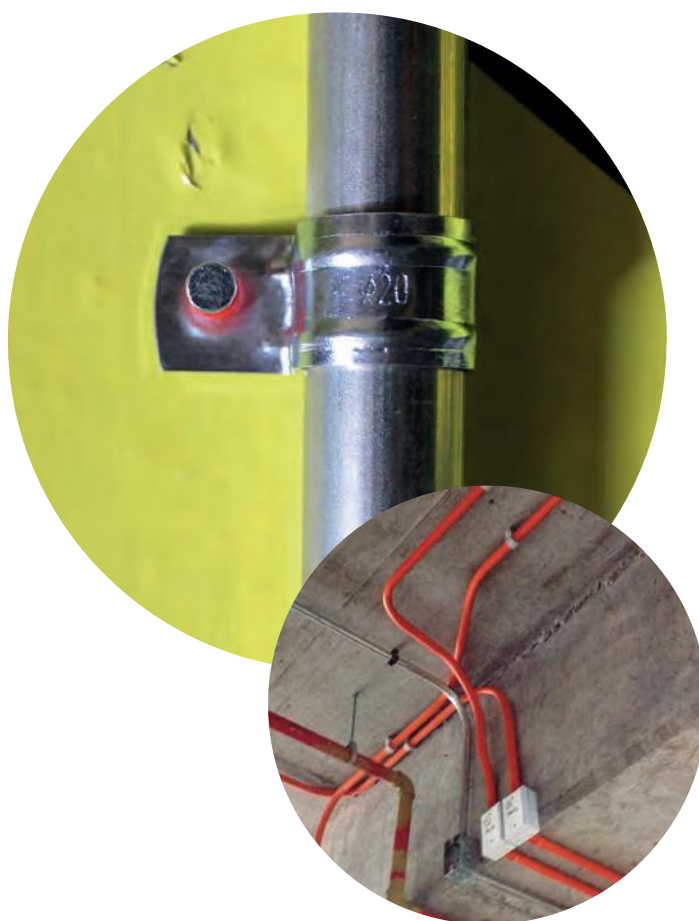


XHA premium nails for gas nailer FORCE ONE

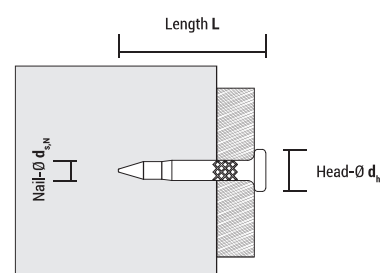


TKA standard nails for gas nailer FORCE ONE

- XHA:
 - Premium nails; suitable for hard concrete and steel
 - Grooved nails to improve grip
- TKA: standard nails for concrete and solid bricks
- Each box includes one high-performance fuel cell, sufficient for 800 nails





Mounting



XHA premium nails

+ each box includes one high-performance fuel cell



Type	Art-No	Nail-Ø $d_{s,N}$ [mm]	Length L [mm]	Head-Ø d_h [mm]	€/100 pcs	 [pcs]	 [pcs]
XHA premium nails 13 mm + fuel cell	913800XHA	3	13	6,3		800	4.000
XHA premium nails 17 mm + fuel cell	917800XHA	3	17	6,3		800	4.000
XHA premium nails 22 mm + fuel cell	922800XHA	3	22	6,3		800	4.000
XHA premium nails 27 mm + fuel cell	927800XHA	3	27	6,3		800	4.000
XHA premium nails 32 mm + fuel cell	932800XHA	3	32	6,3		800	4.000
XHA premium nails 38 mm + fuel cell	938800XHA	3	38	6,3		800	4.000

Steel nails FORCE ONE



TKA standard nails

+ each box includes one high-performance fuel cell



Type	Art-No	Nail-Ø $d_{s,N}$ [mm]	Length L [mm]	Head-Ø d_h [mm]	€/100 pcs	[pcs]	[pcs]
TKA nails 19 mm + fuel cell	919800TKA	2,6	19	6,3		800	4.000
TKA nails 25 mm + fuel cell	925800TKA	2,6	25	6,3		800	4.000

Overview - Suitable building materials for nails XHA and TKA

	XHA 13 mm	XHA 17 mm	TKA 19 mm	XHA 22 mm	TKA 25 mm	XHA 27 mm	XHA 32 mm	XHA 38 mm
Steel	●							
Concrete > C20/25		●		○				
Concrete C20/25		○	●	●	●	○		
Solid brick		○	●	●	●	●	○	
Hollow brick					●	●	●	
Wood								●

● very suitable

○ suitable to a limited extent

Multidiameter nylon clamp Abranyl® ABT

Advantages

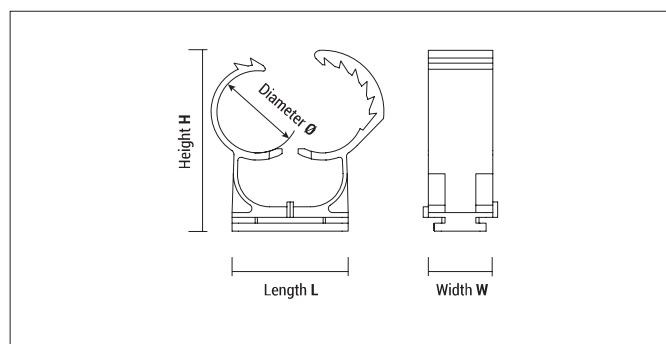


- Fast installation in 3 seconds with gas nailer FORCE ONE. The clamp closes automatically when the pipe is pushed in.
- Multidiameter: One clamp size covers three pipe diameters
- UL-tested
- Halogen free
- RoHS compliant
- With alignment marking

Approvals and certificates



Mounting



Type	Ø [mm]	Length L [mm]	Height H [mm]	Width W [mm]
ABT 14/18	14,5	24,0	35,6	16,0
ABT 20/25	19,5	29,0	45,5	16,0
ABT 25/32	25,5	36,0	53,6	16,0
ABT 35/42	34,2	45,0	66,4	16,0



ABT

Type Ø	Art-No		Art-No		€/100 pcs	Pipe-Ø				[pcs]	[pcs]
	grey	€/100 pcs	black	white		Metric [mm]	Copper [mm]	Steel [inch]	Plastic [mm]		
ABT 14/18	918ABT		9418ABT	9118ABT		16	14-15-18	3/8"	16	100	600
ABT 20/25	925ABT		9425ABT	9125ABT		20-25	22	1/2"	20-25	50	450
ABT 25/32	932ABT		9432ABT	9132ABT		32	28	3/4"	32	50	300
ABT 35/42	942ABT		9442ABT	9142ABT		40	35-42	1"-1 1/4"	40-42	25	150

Compatible with gas nailer **FORCE ONE**, Hilti GX 3, BX 3-ME, Würth DIGA CS2, DeWalt Trak It® C5, DeWalt DCN890, Powers Trak It® C3, Spit Pulsa 700/800E

Pipe ring clip

UT

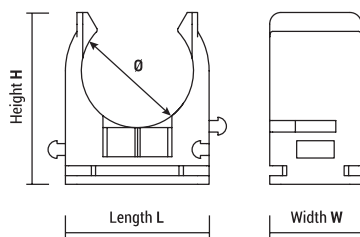
Advantages



- Fast installation with gas nailer FORCE ONE
- UT clips can be mounted in series due to lateral slots
- A marking allows quick alignment
- Halogen free
- RoHS compliant



Mounting



UT

Approvals and certificates



Type	Ø [mm]	Length L [mm]	Height H [mm]	Width W [mm]
UT 16	15,5	23,0	25,5	16,0
UT 20	19,5	25,0	29,5	16,0
UT 25	24,5	30,5	34,0	16,0
UT 32	31,0	38,0	42,0	16,0
UT 40	39,0	46,0	50,0	16,0

Type	Art-No	Pipe-Ø Plastic [mm]	€ / 100 pcs	[pcs]	[pcs]
UT 16	916UT	16		100	900
UT 20	920UT	20		100	900
UT 25	925UT	25		100	900
UT 32	932UT	32		50	450
UT 40	940UT	40		50	300

Compatible with gas nailer **FORCE ONE**, Powers Trak It® C3, Spit Pulsa 700E/800E

Nylon clip for flat cables

TPC & TPLC



Advantages



TPC

TPLC

- Perfectly suited for fixing flat cables



Approvals and certificates



Mounting



TPC, TPLC

Type	Art-No	For cable-Ø [mm]	Length L [mm]	Width W [mm]	Height H [mm]	€/ 100 pcs	 [pcs]	 [pcs]
TPC 6x17	9TPC	6x15	44,0	22,0	7,5		100	900
TPLC 9x25	9TPLC	9x25	64,5	30,0	10,5		100	900

Compatible with **FORCE ONE** and Powers Trak It® C3, Spit Pulsa 700E/800E

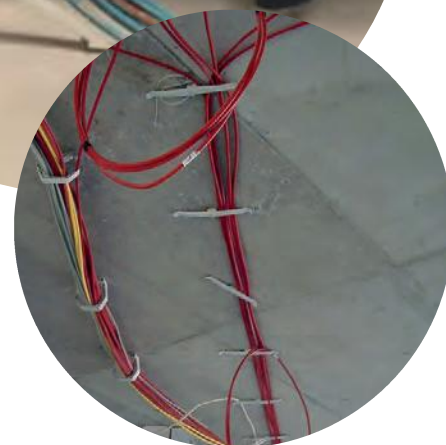
Wire conduit

WSC & WDC

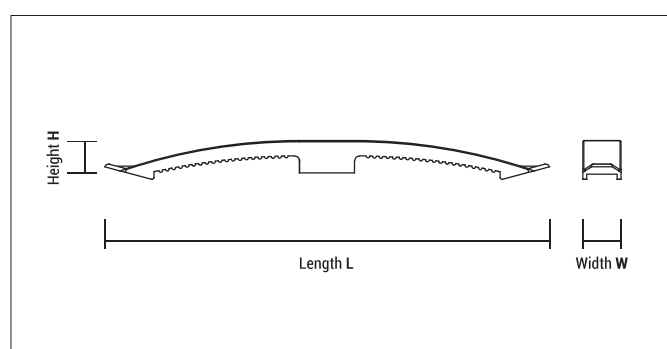
Advantages



- Versatile in use
- Simply push the cable under the wing
- Several cables can be secured with only one fixing point
- Can also be fixed with a plug Ø6 or a nail plug
- RoHS compliant
- Halogen free



Mounting



Approvals and certificates



WSC / WDC

Type	Art-No	Length L [mm]	Width W [mm]	Height H [mm]	€/100 pcs	[pcs]	[pcs]
WSC	9WSC	128	20	17		100	900
WDC	9WDC	232	20	17		50	450

Compatible with gas nailer **FORCE ONE**, Powers Trak It® C3, Spit Pulsa 700E/800E

Cable tie fasteners

TBB, TBBL, TBBD, TBM

Advantages

- Rounded shape enables self-centering the pipe / cable
- Easy mounting of lightweight cables and conduits
- Can be used flexibly, as it is suitable for various pipe diameters
- Halogen free
- RoHS compliant

Approvals and certificates





TBB



TBB for FORCE ONE

Mounting TBB





Type	Art-No	Height [mm]	Diameter Ø [mm]	€/ 100 pcs	 [pcs]	 [pcs]
TBB black	9TBB	13	27,5		100	1.200
TBB grey	9GRTBB	13	27,5		100	1.200

Compatible with gas nailer **FORCE ONE**, Powers Trak It® C3, Spit Pulsa 700/800E



TBB

Type	Art-No	Height [mm]	Diameter Ø [mm]	€/ 100 pcs	 [pcs]	 [pcs]
TBB grey	9NTBB	13	27,5		100	1.200

Compatible with gas nailer Hilti GX 3, BX 3-ME, Würth DIGA CS2, DeWalt Trak It® C5, DeWalt DCN890, Powers Trak It® C3, Spit Pulsa 700/800E

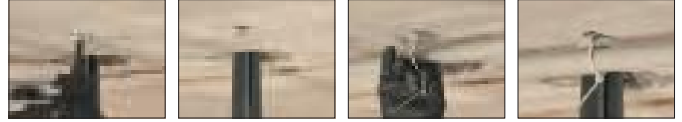
TBBL



TBBL black

TBBL grey

Mounting TBBL



TBBL

Type	Art-No	€/100 pcs	[pcs]	[pcs]
TBBL black*	94TBBL		200	900
TBBL grey*	9TBBL		200	900

* Each box includes 200 pcs cable tie 4,8 x 288

Compatible with gas nailer **FORCE ONE**, Powers Trak It® C3, Spit Pulsa 700E/800E

TBBD



Mounting TBBD



TBBD

Type	Art-No	Length L [mm]	Width W [mm]	Height H [mm]	€/100 pcs	[pcs]	[pcs]
TBBD	9TBBD	80,0	18,0	9,5		100	600

Compatible with gas nailer **FORCE ONE**, Powers Trak It® C3, Spit Pulsa 700E/800E

TBM



TBM: metal version with 6 mm hole for fixing with a screw or a plug.

TBM

Type	Art-No	Length L [mm]	Width W [mm]	Height H [mm]	Clearance hole Ø [mm]	€/100 pcs	[pcs]	[pcs]
TBM	9TBM	53	25	14	6		100	900

Compatible with gas nailer **FORCE ONE**, Powers Trak It® C3, Spit Pulsa 700E/800E

Conduit clips

FP & FPD

Advantages



FPD double



Alignment marking



FP single

- Multidiameter: Each clip covers 3 pipe diameters
- Also suitable for flexible empty tubes on the floor
- Flexible use, **as compatible with every gas nailer**
- The alignment marking of the FPD supports the installation of cables in a straight line
- Halogen free

FPD

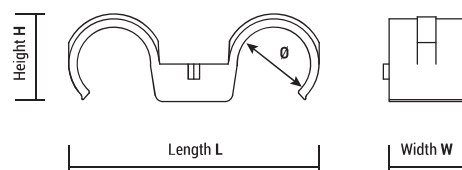
Type	Art-No	Pipe-Ø			Pipe sizes [mm]	Length L [mm]	Width W [mm]	Height H [mm]	€/100 pcs	[pcs]	[pcs]
		Copper [mm]	Steel [inch]	Plastic [mm]							
FPD 16	916FPD	18	3/8"	16	16 - 19	59	20	19,5		100	900
FPD 20	920FPD	22	1/2"	20	20 - 23	68	20	23,8		50	450
FPD 25	925FPD	28	3/4"	25	25 - 28	81	20	29		50	450

FP

Type	Art-No	Pipe-Ø			Length L [mm]	Width W [mm]	€/100 pcs	[pcs]	[pcs]
		Metric [mm]	Copper [mm]	Steel [inch]					
FP 16	916FP	16	–	–	16	41,5	23	100	900
FP 18	918FP	–	18	3/8"	–	43,5	23	100	900
FP 20	920FP	20	–	–	20	45,5	23	100	600
FP 22	922FP	–	22	1/2"	–	47,5	23	100	600
FP 25	925FP	25	–	–	25	50,5	23	100	600
FP 28	928FP	–	28	3/4"	–	53,5	23	100	600
FP 32	932FP	32	–	–	32	57,5	23	50	450



Mounting



Conduit clip

FT

Advantages

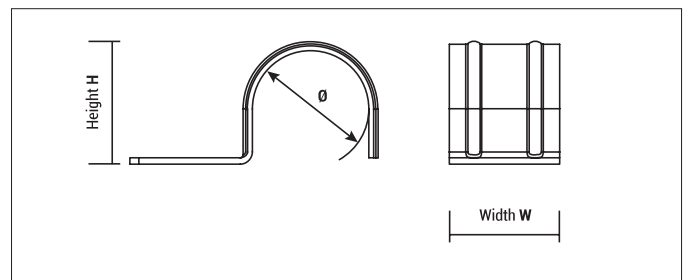


- Can be fastened with any gas nailer
- High stability through reinforcing ribs
- Very fast installation of electric cables, flexible and rigid cable conduits, water and heating pipes
- Also suitable for flexible empty tubes on the floor

Mounting



Type	Ø [mm]	Sheet thickness [mm]	Height H [mm]	Width W [mm]
FT 16	15,4	1,0	15,0	15,0
FT 18	17,5	1,0	17,0	15,0
FT 20	19,4	1,2	18,5	18,0
FT 22	21,5	1,2	20,5	18,0
FT 25	24,4	1,2	23,5	18,0
FT 28	27,3	1,2	26,5	20,0
FT 32	31,3	1,2	30,0	20,0



FT

Type	Art-No	Pipe-Ø				€/100 pcs	[pcs]	[pcs]
		Metric [mm]	Copper [mm]	Steel [inch]	Plastic [mm]			
FT 16	916FT	16	–	–	16		100	1.800
FT 18	918FT	–	18	3/8"	–		100	900
FT 20	920FT	20	–	–	20		100	900
FT 22	922FT	–	22	1/2"	–		100	900
FT 25	925FT	25	–	1/8"	25		100	900
FT 28	928FT	–	28	–	–		100	900
FT 32	932FT	–	–	–	32		100	900

Metal conduit clip

PFT & DFT

Advantages



- Simple and quick mounting option for fire alarm cables, cables or pipes
- Very fast installation of electric cables, flexible and rigid cable conduits, water and heating pipes
- Support rib for high stability of the clip and secure hold



PFT

Type	Art-No	Pipe-Ø		€/100 pcs	[pcs]	[pcs]
		Copper [mm]	Steel [mm]			
PFT 5	95PFT	5	–		100	1.800
PFT 6	96PFT	6	–		100	1.800
PFT 7	97PFT	7	–		100	1.800
PFT 8	98PFT	8	–		100	1.800
PFT 10	910PFT	10	1/8"		100	1.800
PFT 12	912PFT	12	–		100	1.800
PFT 14	914PFT	14	–		100	900

Compatible with gas nailer **FORCE ONE**, Powers Trak It® C3, Spit Pulsa 700E/800E, Hilti GX 3, BX 3-ME



DFT

Type	Art-No	Pipe-Ø		€/100 pcs	[pcs]	[pcs]
		Copper [mm]	Steel [mm]			
DFT 5	95DFT	5	–		100	1.800
DFT 6	96DFT	6	–		100	1.800
DFT 7	97DFT	7	–		100	1.800
DFT 8	98DFT	8	–		100	900
DFT 10	910DFT	10	1/8"		100	900
DFT 12	912DFT	12	–		100	900

Compatible with gas nailer **FORCE ONE**, Powers Trak It® C3, Spit Pulsa 700E/800E, Hilti GX 3, BX 3-ME

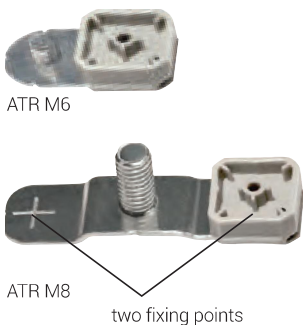


Mounting



Stud accessory ATR

Advantages



- Stable design ensures high resistance
- Marking enables quick alignment



Mounting

ATR 6





ATR 8



Type	Thread	Length connecting thread	Rec. Loads
ATR 6	M6	6,5	30 kg
ATR 8	M8	10/16	50 kg



ATR

Type	Art-No	Dimensions Thread x Length	Number of fixing points	€/ 100 pcs	 [pcs]	 [pcs]
ATR 6	9TR6	M6x6,5	1		100	900
ATR 8C	9TR8C	M8x10	2		100	900
ATR 8L	9TR8L	M8x16	2		100	900

Compatible with gas nailer **FORCE ONE**, Powers Trak It® C3, Spit Pulsa 700E/800E

Rod hanger ATV

Advantages

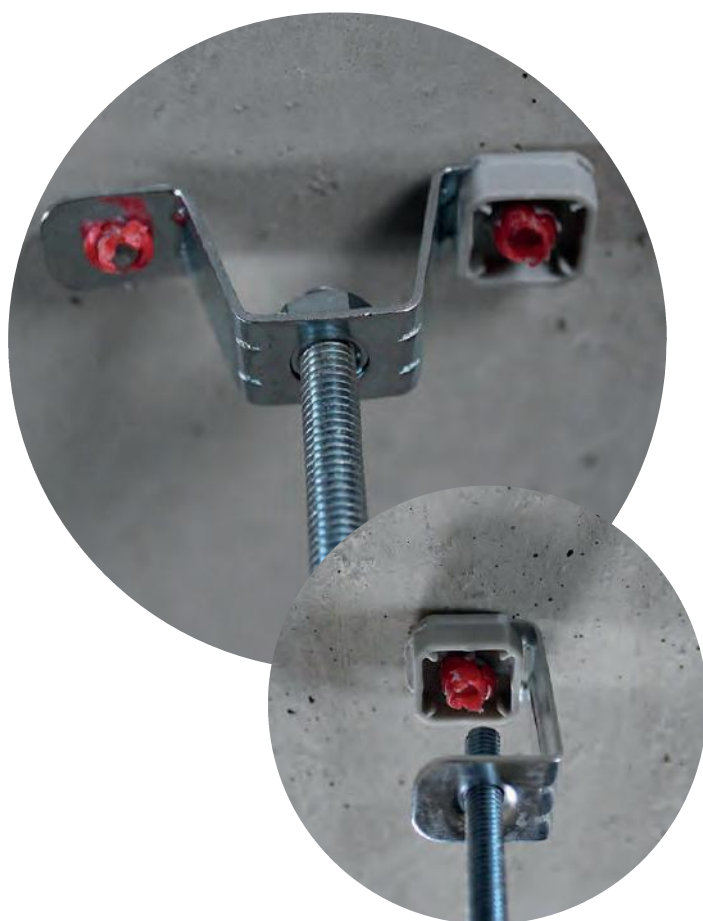


ATV 4, 5, 6

ATV 8
with height adjustment

ATVS 8

- Fast mounting with gas nailer FORCE ONE
- Metric connecting thread for installation with anchor rod
- ATV8: Easy and quick adjustment of the anchor rod



Mounting



ATV 4, 5, 6



ATV 8



ATV, ATVS

Type	Art-No	Metric thread	€/100 pcs	 [pcs]	 [pcs]
ATV4	9TV4	M4		100	600
ATV5	9TV5	M5		100	600
ATV6	9TV6	M6		100	600
ATV8	9TV8	M8		50	450
ATVS8	9TVS8	M8		50	450

Compatible with gas nailer **FORCE ONE**, Powers Trak It® C3, Spit Pulsa 700E/800E

Ceiling hanger

AAT

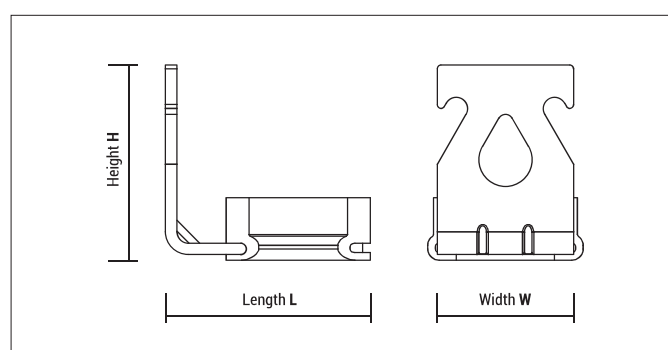
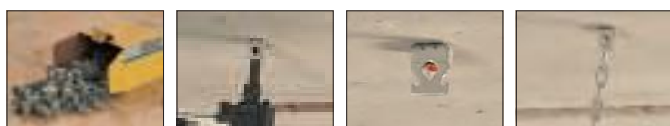
Advantages



- Very fast mounting in 10-15 seconds
- Clearance hole Ø 7 mm



Mounting



AAT

Type	Art-No	Height H [mm]	Length L [mm]	Width W [mm]	€/100 pcs	 [pcs]	 [pcs]
AAT	9AAT	27	26	19		100	900

Compatible with gas nailer **FORCE ONE**, Powers Trak It® C3, Spit Pulsa 700E/800E

Metal washer

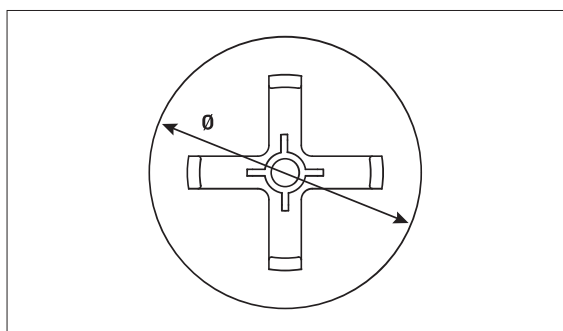
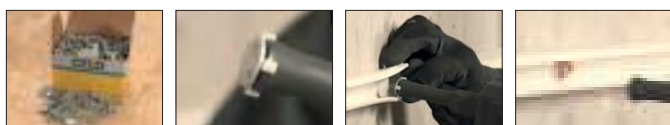
AW

Advantages



- Fast fixing of cable ducts, foils, meshes, sealing membranes, fleece etc.
- Metal Washer clamps on the nose of the gas nailer FORCE ONE and can therefore be installed with one hand
- Available in two different diameters

Mounting



AW

Type	Art-No.	Ø [mm]	€/100 pcs	 [pcs]	 [pcs]
AW 15	915AW	15		200	3.600
AW 25	925AW	25		200	3.600

Compatible with gas nailer **FORCE ONE**, Powers Trak It® C3, Spit Pulsa 700E/800E