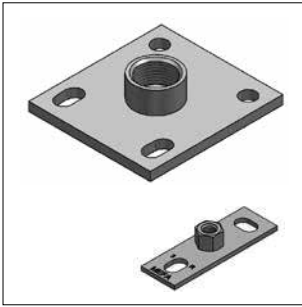
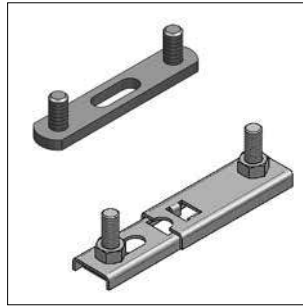


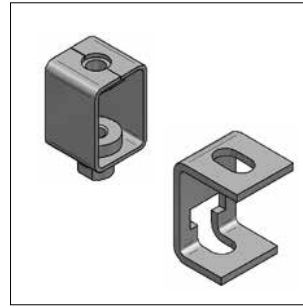
■ MEFA mounting accessories



Base plates  
Page 5/2



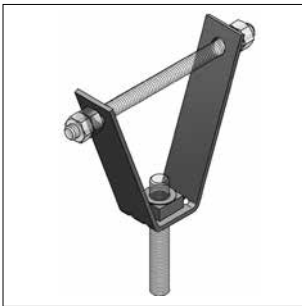
Double holder  
Page 5/4



Height-adjustable suspensions  
Page 5/5



Pendular bolt joints  
Page 5/6



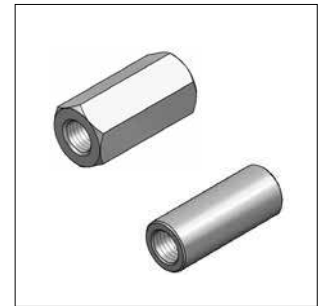
Trapeze hanger  
Page 5/7



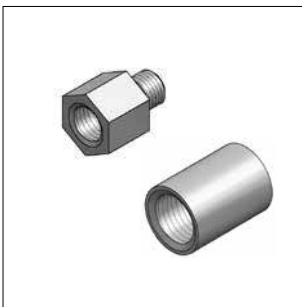
Threaded hooks, distance angles  
Page 5/8



Threaded rods and bolts,  
protecting caps  
Page 5/9



Threaded couplings, reducer  
Page 5/11



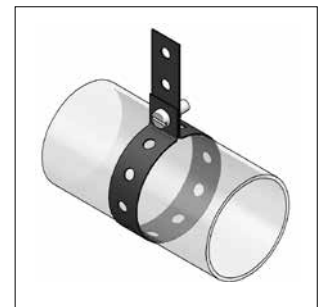
Reducer hexaon, reducing  
adaptors  
Page 5/12



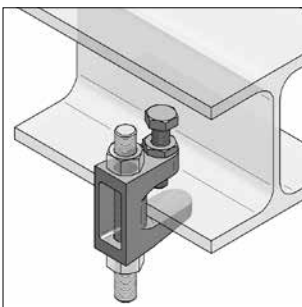
Double nipples, distance tubes  
Page 5/13



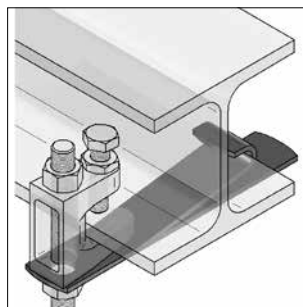
Screws, nuts and washers  
Page 5/14



MEFA Plastahl  
Page 5/20



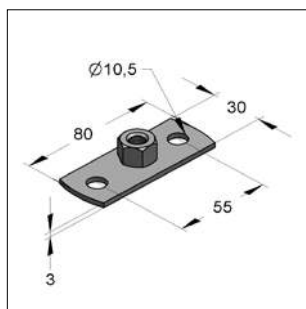
Girder clamps  
Page 5/21



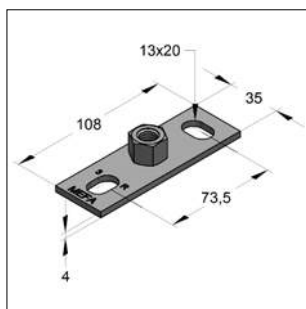
Safety lug  
Page 5/22

05

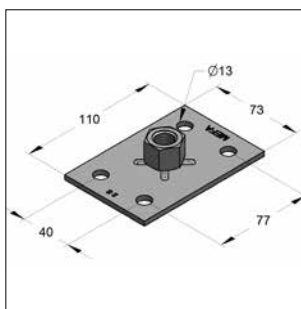
## ■ Base plates



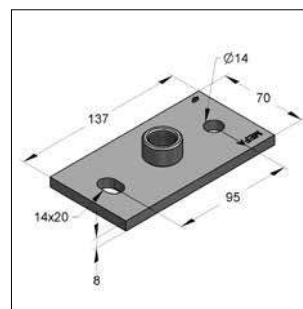
Base plate type 0



Base plate type I



Base plate type II



Base plate type III

### Specification:

Application area: plates with threaded connection suitable for mounting on steel structure or profile rails.  
Used for manufacturing pipe clamp connections via threaded pin/- rod or distance tube.

Remark: Please pay attention to specified distance of axis-center and edge in combination with approved anchors

### Technical data:

Material: steel  
Material type: S235JR  
Surface: galvanized<sup>1)</sup>

<sup>1)</sup> Components for outdoor application also available with Zinc-Nickel-coating (corrosion-protection class C3 acc. to ISO 9223). Delivery time on request!

<sup>2)</sup> matching sound-decoupling set see on page 3a/11

05

### Type 0

Identification	Thread	Dimension plate length x width x thickness [mm]	Perforation [mm]	max. load suspension [kN]	Weight [kg/pc.]	Packing [pcs.]	Part-No.
Base plate type 0	M8	80 x 30 x 3,0	10,5	1,05	0,063	50	05900008
Base plate type 0	M10	80 x 30 x 3,0	10,5	1,05	0,074	50	05900010

### Type I

Base plate type I	M8/M10	108 x 35 x 4,0	13,0 x 20	1,50	0,137	50	0590044302
Base plate type I	M12	108 x 35 x 4,0	13,0 x 20	1,50	0,137	50	059006102
Base plate type I	M16	108 x 35 x 4,0	13,0 x 20	1,50	0,163	50	059008802
Base plate type I	1/2"	108 x 35 x 4,0	13,0 x 20	1,50	0,137	50	059004502

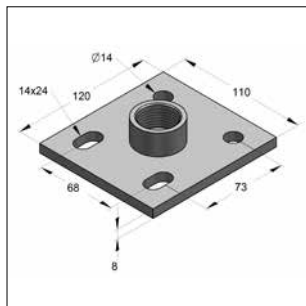
### Type II

Base plate type II	M8	110 x 73 x 4,0	13,0	3,40	0,225	50	059050701
Base plate type II	M10	110 x 73 x 4,0	13,0	3,40	0,226	50	059054101
Base plate type II	M12	110 x 73 x 4,0	13,0	3,40	0,274	50	059052501
Base plate type II	M16	110 x 73 x 4,0	13,0	3,40	0,301	50	059053301
Base plate type II	1/2"	110 x 73 x 4,0	13,0	3,40	0,277	50	059050901
Base plate type II	3/4"	110 x 73 x 4,0	13,0	3,40	0,290	50	059051701
Base plate type II	1"	110 x 73 x 4,0	13,0	3,40	0,324	50	059056801

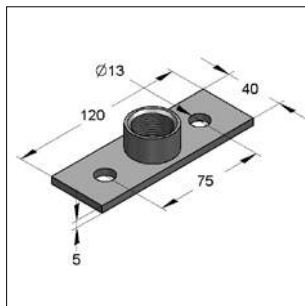
### Type III<sup>2)</sup>

Base plate type III	M10	137 x 70 x 8,0	14,0 x 20,0	10,0	0,602	1	059060801
Base plate type III	M12	137 x 70 x 8,0	14,0 x 20,0	10,0	0,606	1	059060601
Base plate type III	M16	137 x 70 x 8,0	14,0 x 20,0	10,0	0,628	1	059060101
Base plate type III	1/2"	137 x 70 x 8,0	14,0 x 20,0	10,0	0,621	1	059060201
Base plate type III	3/4"	137 x 70 x 8,0	14,0 x 20,0	10,0	0,634	1	059059901
Base plate type III	1"	137 x 70 x 8,0	14,0 x 20,0	10,0	0,668	1	059060001
Base plate type III	1 1/4"	137 x 70 x 8,0	14,0 x 20,0	10,0	0,699	1	059060301
Base plate type III	1 1/2"	137 x 70 x 8,0	14,0 x 20,0	10,0	0,737	1	059060501

## ■ Base plates



Base plate type IV



Base plate type V

### Specification:

Application area: plates with threaded connection suitable for mounting on steel structure or profile rails.  
Used for manufacturing pipe clamp connections via threaded pin/- rod or distance tube.

Remark: Please pay attention to specified distance of axis-center and edge in combination with approved anchors

### Technical data:

Material: steel  
Material type: S235JR  
Surface: galvanized<sup>1)</sup>

<sup>1)</sup> Components for outdoor application also available with Zinc-Nickel-coating (corrosion-protection class C3 acc. to ISO 9223). Delivery time on request!

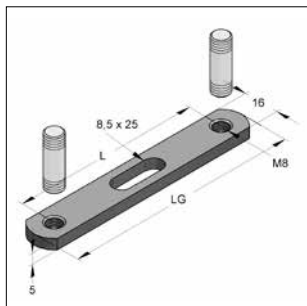
### Type IV

Identification	Thread	Dimension plate length x width x thickness [mm]	Perforation [mm]	max. load suspension [kN]	Weight [kg/pc.]	Packing [pcs.]	Part-No.
Base plate type IV	M16	120 x 110 x 8,0	14,0 x 24,0	14,0	0,827	1	059055501
Base plate type IV	1/2"	120 x 110 x 8,0	14,0 x 24,0	14,0	0,820	1	059055601
Base plate type IV	3/4"	120 x 110 x 8,0	14,0 x 24,0	14,0	0,833	1	059055701
Base plate type IV	1"	120 x 110 x 8,0	14,0 x 24,0	14,0	0,867	1	059055801
Base plate type IV	1 1/4"	120 x 110 x 8,0	14,0 x 24,0	14,0	0,898	1	059055901

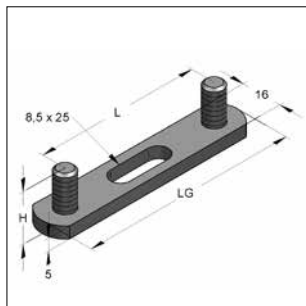
### Type V

Base plate type V	1/2"	120 x 40 x 5,0	13,0	2,7	0,213	50	0590586
Base plate type V	3/4"	120 x 40 x 5,0	13,0	2,7	0,226	50	0590587
Base plate type V	1"	120 x 40 x 5,0	13,0	2,7	0,260	50	0590588

## Double holder



Double holder



Double holder MD

**Specification:**

Double holder: suitable for threaded bolts with female thread in different lengths, without threaded bolt  
 Double holder MD: with fixed threaded pin

**Technical data:**

Material: steel  
 Surface: galvanized

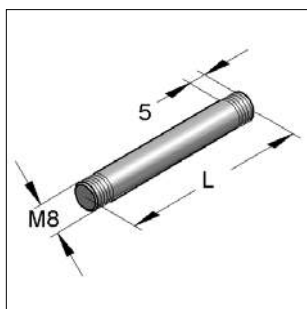
**Double holder**

Identification	L [mm]	Female thread [mm]	Dimension		max. tensile load [kN]	Weight [kg/pc.]	Packing [pcs.]	Part-No.
			LG [mm]	H [mm]				
Double holder	65	M8	87,0	-	0,2	0,042	100	0763071
Double holder	85	M8	105,5	-	0,2	0,055	100	0763098
Double holder	105	M8	125,5	-	0,2	0,068	100	0763128
Double holder	160	M8	181,0	-	0,2	0,104	100	0763160

**Double holder MD**

Double holder MD	65	M8	85,0	20,0	0,2	0,055	50	0760048
Double holder MD	105	M8	125,0	20,0	0,2	0,081	50	0760056

## Threaded bolt



Threaded bolt

**Specification:**

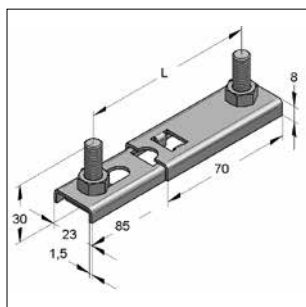
Application area: suitable for double holder with female thread

**Technical data:**

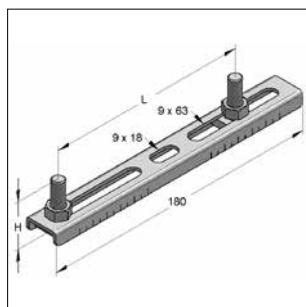
Material: steel  
 Surface: galvanized

Identification	L [mm]	Male thread	Thread length [mm]	Weight [kg/pc.]	Packing [pcs.]	Part-No.
Threaded bolt	13	M8	5	0,005	100	0766151
Threaded bolt	25	M8	5	0,009	100	0766259
Threaded bolt	35	M8	5	0,012	100	0766356
Threaded bolt	45	M8	5	0,015	100	0766453
Threaded bolt	55	M8	5	0,018	100	0766550
Threaded bolt	65	M8	5	0,021	100	0766658

## Double holder movable



Double holder VS



Double holder VSG

### Specification:

Double holder VS: length can be telescopic adjusted, with threaded bolts and nuts

Double holder VSG: adjustable distance of the threaded bolts, with threaded bolts and nuts

### Technical data:

Material: steel  
Material type: S235JR  
Surface: galvanized

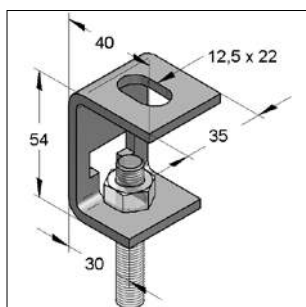
### Double holder VS

Identification	L	Threaded bolt	H	max. tensile load	Weight	Packing	Part-No.
	[mm]		[mm]	[kN]	[kg/pc.]	[pcs.]	
Double holder VS	65 - 110	M8 x 30	30	0,15	0,103	100	0590199

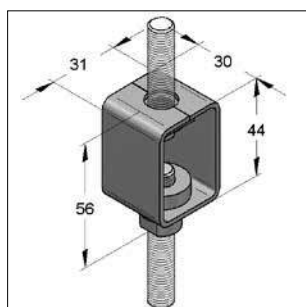
### Double holder VSG

Double holder VSG	46 - 154	M8 x 20	20	0,35	0,122	50	0590118
Double holder VSG	46 - 154	M8 x 30	30	0,35	0,128	50	0590126
Double holder VSG	46 - 154	M8 x 40	40	0,35	0,135	50	0590134
Double holder VSG	46 - 154	M8 x 50	50	0,35	0,141	50	0590142

## Height-adjustable suspension



Suspended bracket type T



Height adjuster

### Specification:

Application area: suitable for single mounting with threaded rods on the ceiling; stepless height-adjustment

Suspended bracket type T: suitable threaded rods: M8, M10, M12

### Technical data:

Material: steel  
Surface: galvanized

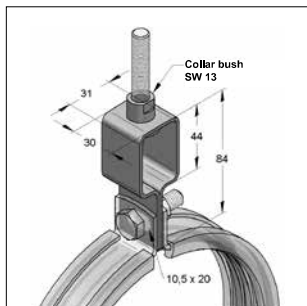
### Suspended bracket

Identification	max. load	Adjustable height	Weight	Packing	Part-No.
	[kN]	[mm]	[kg/pc.]	[pcs.]	
Suspended bracket type T	1,5	36	0,100	100	0781100

### Height adjuster

Height adjuster M8 / SMU8	3,0	30	0,101	50	0783021
Height adjuster M10 / SMU10	3,0	30	0,103	50	0783110

## ■ Height-adjustable suspension



Height regulator

**Specification:**

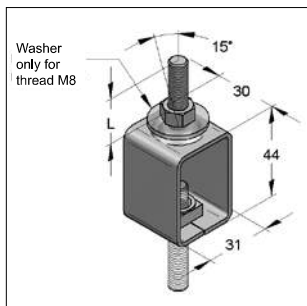
Application area: suitable for single mounting with threaded rods under ceiling; stepless height-adjustment

**Technical data:**

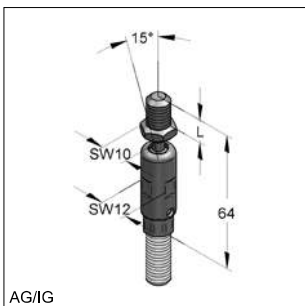
Material: steel  
Material type: S235JR  
Surface: galvanized

Identification	max. load [kN]	Adjustable height [mm]	Weight [kg/pc.]	Packing [pcs.]	Part-No.
<b>Height regulator M8</b>	3,0	30	0,125	50	0780014

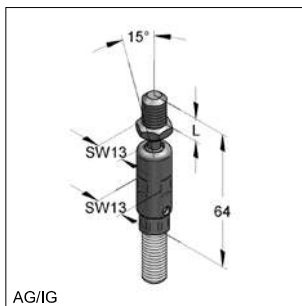
## ■ Pendular bolt joints



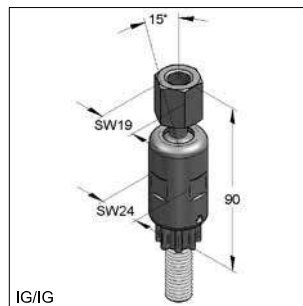
Pendulum hanger



Pendular bolt joint M8/M8



Pendular bolt joint M10/M10



Pendular bolt joint M12/M12

**Specification:**

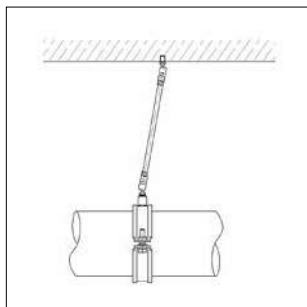
Pendular bolt joint with inspection hole to check the thread depth of threaded rods

**Technical data:**

Material: steel  
Surface: galvanized

Pendulum hanger: height adjustment and pendulum function

Identification	Connection	Thread length L [mm]	max. load [kN]	Weight [kg/pc.]	Packing [pcs.]	Part-No.
<b>Pendulum hanger M8/M8</b>	-	22	2,5	0,106	50	0784031
<b>Pendulum hanger M10/M10</b>	-	22	3,0	0,119	50	0784136
<b>Pendulum hanger M12/M12</b>	-	20	3,6	0,137	50	0784250
<b>Pendular bolt joint M8/M8</b>	AG / IG	15	2,5	0,040	50	0788088
<b>Pendular bolt joint M10/M10</b>	AG / IG	13	2,5	0,037	50	0788108
<b>Pendular bolt joint M12/M12</b>	IG / IG	-	5,0	0,140	50	0788128

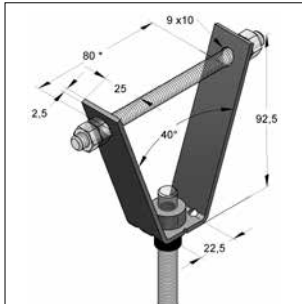


**Remark:**

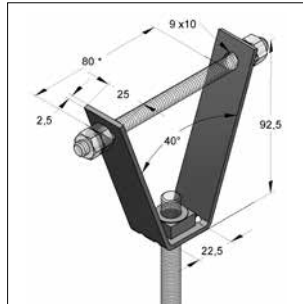
For stainless pipe mounting always two pendulum joints are required

**i** max. absorbtional tube extension when using pendular bolt joint see chapter 15

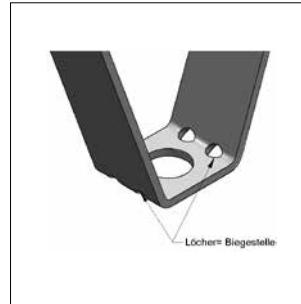
## Trapeze hanger



Trapeze hanger with height regulator



Trapeze hanger with welded nut



can bend open (up to approx. 120 mm)



VdS-approval number:  
G4930025 with connection  
M8 and M10, up to OD 50

### Specification:

Mounting instruction: trapeze hanger with threaded rod should be mounted via the lateral holes. For mounting the pipelines and ventilation ducts directly under a trapeze sheeting.

Needed accessory: threaded bolt M8 / 110  
hexagon nut M8, DIN EN ISO 4032

### Technical data:

Material: steel  
Material type: S235JR  
Surface: galvanized

\* not approved according to VdS

### With mounted height-adjustment nut

Identification	Threaded connection	max. load [kN]	Weight [kg/pc.]	Packing [pcs.]	Part-No.
Trapeze hanger MU-B	M8	2,0	0,117	100	0783803
Trapeze hanger MU-B	M10	2,0	0,121	100	0783838

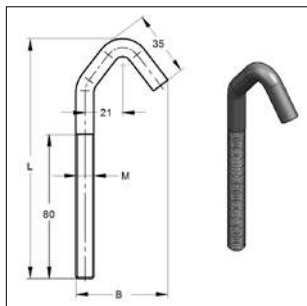
### With welded nut for mounting rails

Trapeze hanger MU-S	M8	2,0	0,111	100	0783900
Trapeze hanger MU-S	M10	2,0	0,117	100	0783935
Trapeze hanger MU-S*	M12	2,0	0,121	100	0783950

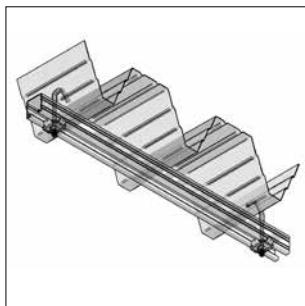
### With hole

Trapeze hanger hole 16,5 mm*		2,0	0,101	100	0783801
------------------------------	--	-----	-------	-----	---------

## Threaded hook



Threaded hook



Mounting example

**Specification:**

Application area: for mounting the pipelines and ventilation ducts directly under trapeze sheeting

\*Load specifications refer only to component

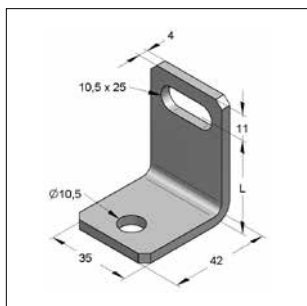
**Technical data:**

Material: steel  
Surface: galvanized

Identification	Dimension		max. load*	Weight	Packing	Part-No.
	M x L [mm]	B [mm]				
<b>Threaded hook</b>	<b>M8 x 130</b>	48	0,7	0,059	50	0592131
<b>Threaded hook</b>	<b>M10 x 130</b>	50	1,3	0,092	50	0592132

05

## Distance angle



Distance angle E

**Technical data:**

Material: steel  
Material type: S235JR  
Surface: galvanized

Identification	L	Weight	Packing	Part-No.
	[mm]	[kg/pc.]	[pc.]	
<b>Distance angle E</b>	25	0,069	1	0630268
<b>Distance angle E</b>	30	0,075	1	0630306
<b>Distance angle E</b>	35	0,080	1	0630357
<b>Distance angle E</b>	40	0,086	1	0630403
<b>Distance angle E</b>	50	0,097	1	0630500
<b>Distance angle E</b>	60	0,108	1	0630608
<b>Distance angle E</b>	70	0,120	1	0630705
<b>Distance angle E</b>	90	0,142	1	0630918
<b>Distance angle E</b>	100	0,153	1	0631000



## Protection cap, round



Protection cap, round

**Technical data:**

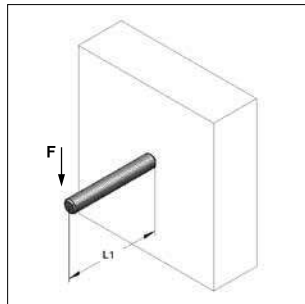
Material: plastic  
Colour: black

Identification	Thread	Weight [kg/pc.]	Packing [pcs.]	Part-No.
Protection cap	M8	0,001	100	0730008
Protection cap	M10	0,001	100	0730010
Protection cap	M12	0,002	100	0730012

## Threaded rods



Threaded rod



**Admissible load\* on bending**

Distance L1 [mm]	M8 F [kN]	M10 F [kN]	M12 F [kN]	M16 F [kN]
50	0,10	0,20	0,34	0,87
100	0,04	0,10	0,17	0,43
150	0,02	0,05	0,11	0,29
200	0,01	0,03	0,06	0,21
250		0,02	0,04	0,13
300		0,01	0,03	0,09
350			0,02	0,07
400			0,01	0,05

\*  $f_y = 235 \text{ N/mm}^2$ , safety factor = 1,5, E-module =  $210.000 \text{ N/mm}^2$   
max. bending  $f = L/150$  related to tensile stress area

**Specification:**

according to DIN EN ISO 976-1

Thread: M8, M10, M12, M16

Length: 1000 up to 3000 mm

**Technical data:**

Material: steel

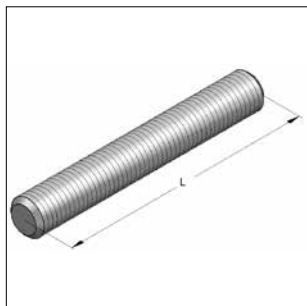
Surface: galvanized

Property class: 4.8

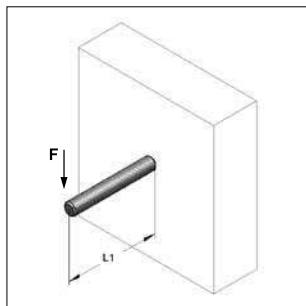
<sup>1)</sup> FWD = fire endurance

Identification	Thread	L [mm]	Limited tractive force max. [kN]	FWD <sup>1)</sup>			Weight [kg/pc.]	Packing [pcs.]	Part-No.
				30 [kN]	60 [kN]	90 [kN]			
Threaded rod	M8	1000	8,96	0,79	0,45	0,34	0,326	50	0730084
Threaded rod	M8	2000	8,96	0,79	0,45	0,34	0,653	1	0730289
Threaded rod	M8	3000	8,96	0,79	0,45	0,34	0,980	1	0730483
Threaded rod	M10	1000	14,20	1,26	0,72	0,55	0,510	25	0730106
Threaded rod	M10	2000	14,20	1,26	0,72	0,55	1,021	1	0730300
Threaded rod	M10	3000	14,20	1,26	0,72	0,55	1,531	1	0730505
Threaded rod	M12	1000	20,64	1,83	1,05	0,8	0,735	25	0730122
Threaded rod	M12	2000	20,64	1,83	1,05	0,8	1,470	1	0730327
Threaded rod	M12	3000	20,64	1,83	1,05	0,8	2,205	1	0730521
Threaded rod	M16	1000	38,43	3,42	1,95	1,49	1,306	10	0730165
Threaded rod	M16	2000	38,43	3,42	1,95	1,49	2,613	1	0730378
Threaded rod	M16	3000	38,43	3,42	1,95	1,49	3,920	1	0730564

## Threaded bolts



Threaded bolt



### Admissible load\* on bending

Distance L [mm]	M8 F [kN]	M10 F [kN]	M12 F [kN]	M16 F [kN]
50	0,10	0,20	0,34	0,87
100	0,04	0,10	0,17	0,43
150	0,02	0,05	0,11	0,29
200	0,01	0,03	0,06	0,21
250		0,02	0,04	0,13
300		0,01	0,03	0,09
350			0,02	0,07
400			0,01	0,05

\*  $f_y = 235 \text{ N/mm}^2$ , safety factor = 1,5, E-module=210.000 N/mm<sup>2</sup>  
max. deflection  $f = L/150$  related to tensile stress area

### Specification:

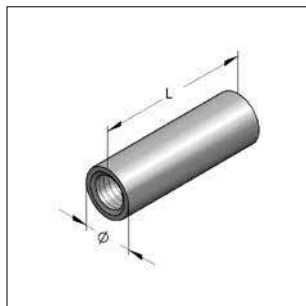
according to DIN EN ISO 976-1  
Thread: M8, M10, M12, M16  
Length: 20 up to 160 mm

### Technical data:

Material: steel  
Surface: galvanized  
Property class: 4.8

Identification	Thread	L [mm]	Limited tractive force max. [kN]	FWD			Weight [kg/pc.]	Packing [pcs.]	Part-No.
				30 [kN]	60 [kN]	90 [kN]			
<b>Threaded bolt</b>	<b>M8</b>	20	8,96	0,79	0,45	0,34	0,007	100	0730815
<b>Threaded bolt</b>	<b>M8</b>	30	8,96	0,79	0,45	0,34	0,010	100	0730823
<b>Threaded bolt</b>	<b>M8</b>	35	8,96	0,79	0,45	0,34	0,012	100	0731358
<b>Threaded bolt</b>	<b>M8</b>	40	8,96	0,79	0,45	0,34	0,013	100	0730831
<b>Threaded bolt</b>	<b>M8</b>	50	8,96	0,79	0,45	0,34	0,017	100	0730858
<b>Threaded bolt</b>	<b>M8</b>	70	8,96	0,79	0,45	0,34	0,023	100	0730874
<b>Threaded bolt</b>	<b>M8</b>	90	8,96	0,79	0,45	0,34	0,030	100	0730890
<b>Threaded bolt</b>	<b>M8</b>	110	8,96	0,79	0,45	0,34	0,036	100	0730912
<b>Threaded bolt</b>	<b>M8</b>	140	8,96	0,79	0,45	0,34	0,046	100	0730940
<b>Threaded bolt</b>	<b>M8</b>	160	8,96	0,79	0,45	0,34	0,053	100	0730963
<b>Threaded bolt</b>	<b>M10</b>	20	14,20	1,26	0,72	0,55	0,010	100	0731021
<b>Threaded bolt</b>	<b>M10</b>	25	14,20	1,26	0,72	0,55	0,013	100	0731032
<b>Threaded bolt</b>	<b>M10</b>	30	14,20	1,26	0,72	0,55	0,016	100	0731048
<b>Threaded bolt</b>	<b>M10</b>	35	14,20	1,26	0,72	0,55	0,018	100	0733350
<b>Threaded bolt</b>	<b>M10</b>	40	14,20	1,26	0,72	0,55	0,021	100	0731056
<b>Threaded bolt</b>	<b>M10</b>	50	14,20	1,26	0,72	0,55	0,026	100	0731064
<b>Threaded bolt</b>	<b>M10</b>	70	14,20	1,26	0,72	0,55	0,036	100	0731072
<b>Threaded bolt</b>	<b>M10</b>	90	14,20	1,26	0,72	0,55	0,046	100	0731099
<b>Threaded bolt</b>	<b>M10</b>	110	14,20	1,26	0,72	0,55	0,056	50	0731110
<b>Threaded bolt</b>	<b>M12</b>	35	20,64	1,83	1,05	0,8	0,026	50	0731234
<b>Threaded bolt</b>	<b>M12</b>	50	20,64	1,83	1,05	0,8	0,037	50	0731250
<b>Threaded bolt</b>	<b>M12</b>	70	20,64	1,83	1,05	0,8	0,052	50	0731269
<b>Threaded bolt</b>	<b>M12</b>	90	20,64	1,83	1,05	0,8	0,066	50	0731293
<b>Threaded bolt</b>	<b>M12</b>	110	20,64	1,83	1,05	0,8	0,081	50	0731315
<b>Threaded bolt</b>	<b>M16</b>	70	38,43	3,42	1,95	1,49	0,091	25	0731672
<b>Threaded bolt</b>	<b>M16</b>	110	38,43	3,42	1,95	1,49	0,143	25	0731715
<b>Threaded bolt</b>	<b>M16</b>	160	38,43	3,42	1,95	1,49	0,208	25	0731763

## Threaded coupling



Threaded coupling, round



Threaded coupling hexagon  
(version with inspection slot)

**Specification:**

Application area: For extension of threaded rods.

Hexagonal distance sleeve with checking taps, for sprinkler installations.

Remark: Fire loads on demand

**Technical data:**

Material: steel

Surface: galvanized<sup>1)</sup>

<sup>1)</sup> Components for outdoor application also available with Zinc-Nickel-coating (corrosion-protection class C3 acc. to ISO 9223). Delivery time on request!

### Threaded coupling, round

Identification	Female thread	L [mm]	OD [mm]	SW [mm]	Weight [kg/pc.]	Packing [pcs.]	Part-No.
Threaded coupling, round	<b>M6</b>	<b>25</b>	10	-	0,012	100	0700010
Threaded coupling, round	<b>M8</b>	<b>30</b>	11	-	0,015	100	0700029
Threaded coupling, round	<b>M10</b>	<b>40</b>	13	-	0,024	100	0700037
Threaded coupling, round	<b>M12</b>	<b>40</b>	15	-	0,030	100	0700045

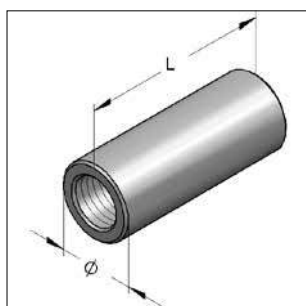
### Threaded coupling hexagon

Threaded coupling, hexagon	<b>M8</b>	<b>30</b>	-	13	0,026	100	0700084
Threaded coupling, hexagon	<b>M10</b>	<b>40</b>	-	17	0,061	50	0700104
Threaded coupling, hexagon	<b>M12</b>	<b>40</b>	-	17	0,046	50	0700123
Threaded coupling, hexagon	<b>M16</b>	<b>50</b>	-	24	0,136	25	0700167

### Threaded coupling hexagon, with inspection hole

Threaded coupling hexagon, with inspection hole	<b>M8</b>	<b>25</b>	-	13	0,021	100	0700092
-------------------------------------------------	-----------	-----------	---	----	-------	-----	---------

## Reducing socket



Reducing socket, round

**Specification:**

Version: round

Remark: Fire loads on demand

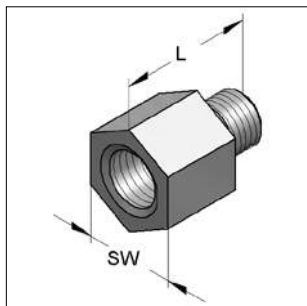
**Technical data:**

Material: steel

Surface: galvanized

Identification	Female threads	L [mm]	OD [mm]	Weight [kg/pc.]	Packing [pcs.]	Part-No.
Reducing socket	<b>M8 / M10</b>	40	16	0,049	100	0710016
Reducing socket	<b>M8 / M12</b>	40	16	0,044	100	0710024
Reducing socket	<b>M10 / M12</b>	40	16	0,041	100	0710032
Reducing socket	<b>M12 / M16</b>	40	22	0,081	25	0710105

## Reducer hexagon



Reducer hexagon

**Specification:**

Version: hexagon  
Female- and male thread

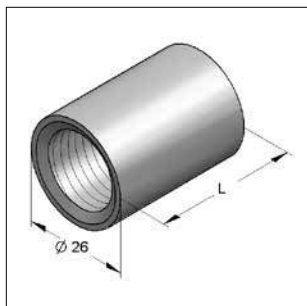
**Technical data:**

Material: steel  
Surface: galvanized

Identification	Thread female/male	Wrench size	L [mm]	Drilling hole depth [mm]	Thread length [mm]	Weight [kg/pc.]	Packing [pcs.]	Part-No.
Reducer, hexagon	M8 / M10	13	21	8,0	8	0,017	100	0725528
Reducer, hexagon	M10 / M8	13	23	8,0	10	0,016	100	0720518
Reducer, hexagon	M10 / M12	13	23	10,0	10	0,019	100	0720496
Reducer, hexagon	M12 / M10	17	25	10,0	10	0,028	100	0720011
Reducer, hexagon	M16 / M12	24	32	10,0	15	0,072	50	0726508
Reducer, hexagon	1/2" / M12	24	29	11,0	8	0,049	50	0726509
Reducer, hexagon	1/2" / M16	30	35	13,5	11	0,116	25	0726510

05

## Reducing adaptor



Reducing adaptor

**Specification:**

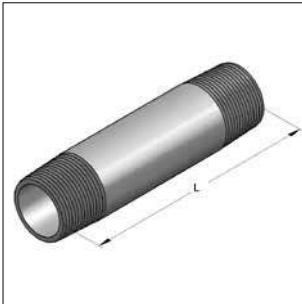
Application area: for all MEFA pipe clamps with welded nut M8 or M10.  
Applicable as transition for M8 or M10 to 1/2".  
Version M8: suited threaded bolt M8x20  
Version M10: suited threaded bolt M10x20

**Technical data:**

Material: steel  
Surface: galvanized

Dimension	Female thread	L [mm]	Weight [kg/pc.]	Packing [pcs.]	Part-No.
Reducing adaptor	M8/ 1/2"	36	0,079	50	0590304
Reducing adaptor	M10/1/2"	36	0,078	50	0590401

## Double nipple



Double nipple

**Specification:**

Length: 40 up to 150 mm

**Technical data:**

 Material: steel  
 Surface: galvanized

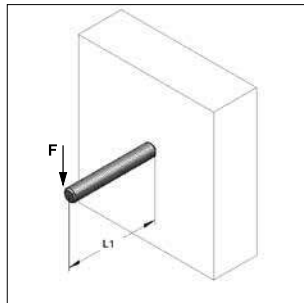
Identification	Thread	L [mm]	Weight [kg/pc.]	Packing [pc.]	Part-No.
Double nipple	1/2"	40	0,037	1	0700403
Double nipple	1/2"	60	0,063	1	0700603
Double nipple	1/2"	80	0,085	1	0700803
Double nipple	1/2"	100	0,119	1	0701003
Double nipple	1/2"	120	0,142	1	0701203
Double nipple	1/2"	150	0,162	1	0701503

05

## Distance tube



Distance tube


**Admissible load\* on bending**

Distance L1 [mm]	1/2" F [kN]	3/4" F [kN]	1" F [kN]	1 1/4" F [kN]
50	1,482	2,940	5,350	10,362
100	0,741	1,470	2,675	5,181
150	0,494	0,980	1,783	3,454
200	0,371	0,735	1,337	2,591
250	0,290	0,588	1,070	2,072
300	0,201	0,490	0,892	1,727
350	0,148	0,380	0,764	1,480
400	0,113	0,291	0,665	1,295
450	0,089	0,230	0,525	1,151
500	0,072	0,186	0,425	1,036

 \* at  $\sigma_{\max.} = 160 \text{ N/mm}^2$ , max. bending  $f = L/150$ 
**Specification:**

 Version: tube with male thread  
 Thread: according to DIN EN ISO 228 „G“

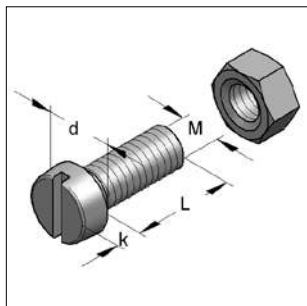
**Technical data:**

 Material: steel  
 Surface: galvanized

<sup>1)</sup> Components for outdoor application also available with Zinc-Nickel-coating (corrosion-protection class C3 acc. to ISO 9223). Delivery time on request!

Identification	Thread	Length [mm]	Weight [kg/pc.]	Packing [m]	Part-No.
Distance tube	1/2"	2000	2,44	2	0737002
Distance tube	3/4"	2000	3,16	2	0737003
Distance tube	1"	2000	4,88	2	0737004
Distance tube	1 1/4"	2000	6,28	2	0737005

## ■ Slotted screw



Slotted screw

**Specification:**

Scope of delivery: with nut according to  
DIN EN ISO 4032

**Technical data:**

Material: steel  
Surface: galvanized  
Property class: 4.6

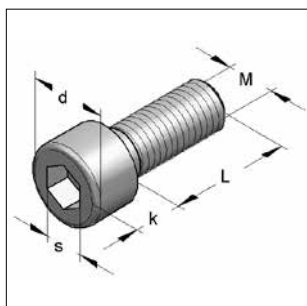
Identification

**Slotted screw**  
**Slotted screw**

Thread	L [mm]	d [mm]	k [mm]	Weight [kg/pc.]	Packing [pcs.]	Part-No.
<b>M6</b>	20	10	3,9	0,008	100	3220060
<b>M8</b>	20	13	5,0	0,015	100	3220095

05

## ■ Allen screw



Allen screw

**Specification:**

according to DIN EN ISO 4762

Version: Allen head with metric thread

Application area: for mounting of C-profile rail in  
profile back

**Technical data:**

Material: steel  
Surface: galvanized<sup>1)</sup>

Needed accessory: washer according to DIN EN ISO 7089

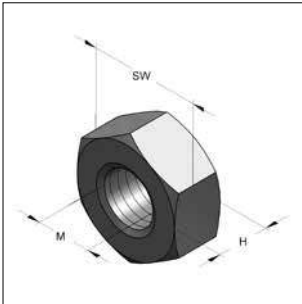
<sup>1)</sup> Components for outdoor application also available with Zinc-Nickel-coating  
(corrosion-protection class C3 acc. to ISO 9223). Delivery time on request!

Identification

**Allen screw**  
**Allen screw**  
**Allen screw**  
**Allen screw**  
**Allen screw**

Thread	L [mm]	s [mm]	d [mm]	k [mm]	Weight [kg/pc.]	Packing [pcs.]	Part-No.
<b>M8</b>	16	6	13	8	0,014	100	3443167
<b>M8</b>	20	6	13	8	0,016	100	3443205
<b>M10</b>	20	8	16	10	0,026	100	3444200
<b>M10</b>	25	8	16	10	0,029	100	3444252
<b>M12</b>	25	10	18	12	0,042	100	3445259

## Hexagon nut



Hexagon nut

**Specification:**  
according to DIN EN ISO 4032

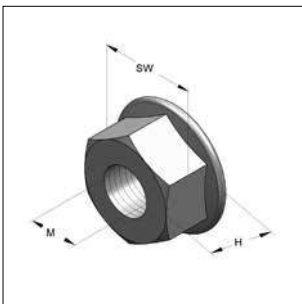
**Technical data:**  
Material: steel  
Surface: galvanized<sup>1)</sup>

<sup>1)</sup> Components for outdoor application also available with Zinc-Nickel-coating (corrosion-protection class C3 acc. to ISO 9223). Delivery time on request!

Identification	Thread M	Height H [mm]	Wrench size SW	Weight [kg/pc.]	Packing [pcs.]	Part-No.
Hexagon nut	<b>M6</b>	5,0	10	0,003	100	4120442
Hexagon nut	<b>M8</b>	6,5	13	0,005	200	4120450
Hexagon nut	<b>M10</b>	8,0	17	0,012	100	4120477
Hexagon nut	<b>M12</b>	10,0	19	0,017	100	4120485
Hexagon nut	<b>M16</b>	13,0	24	0,039	100	4120523

05

## Flange nut



Flange nut

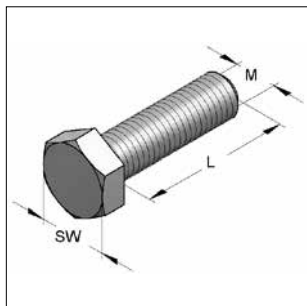
**Specification:**  
according to DIN 6923

**Technical data:**  
Material: steel  
Surface: galvanized<sup>1)</sup>

<sup>1)</sup> Components for outdoor application also available with Zinc-Nickel-coating (corrosion-protection class C3 acc. to ISO 9223). Delivery time on request!

Identification	Thread M	Height H [mm]	Wrench size SW	Ø - Flange [mm]	Weight [kg/pc.]	Packing [pcs.]	Part-No.
flange nut	<b>M8</b>	8	13	17,9	0,0076	50	0470008
flange nut	<b>M10</b>	10	15	21,8	0,0140	25	0470020
flange nut	<b>M12</b>	12	18	26,0	0,0236	25	0470022
flange nut	<b>M16</b>	16	24	34,5	0,0521	25	0470016

## Hexagon screw



Hexagon screw

**Specification:**

according to DIN EN ISO 4017  
 Thread: M8, M10, M12  
 Length: 16 up to 60 mm

**Technical data:**

Material: steel  
 Surface: galvanized<sup>1)</sup>  
 Property class: 8.8

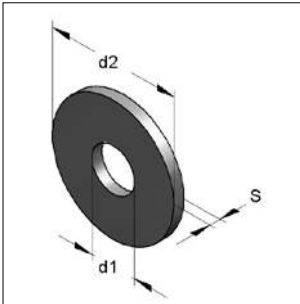
<sup>1)</sup> Components for outdoor application also available with Zinc-Nickel-coating (corrosion-protection class C3 acc. to ISO 9223). Delivery time on request!

05

Identification	Thread M	Wrench size SW	Length L [mm]	Weight [kg/pc.]	Packing [pcs.]	Part-No.
Hexagon screw	M8	13	16	0,013	100	3204165
			20	0,014	100	3204205
			25	0,016	100	3204255
			30	0,018	100	3204305
			35	0,020	100	3204355
			40	0,022	100	3204405
			45	0,024	100	3204455
			50	0,026	100	3204503
Hexagon screw	M10	17	16	0,021	100	3205162
			20	0,023	100	3205201
			25	0,027	100	3205251
			30	0,030	100	3205301
			35	0,033	100	3205302
			40	0,036	100	3205401
			45	0,039	100	3206508
			50	0,042	100	3205501
Hexagon screw	M12	19	20	0,048	100	3206602
			25	0,034	100	3206205
			30	0,039	100	3206591
			35	0,043	100	3206305
			40	0,047	100	3206306
			45	0,052	100	3206606
			50	0,056	100	32066064
			55	0,061	100	32066065
	60	0,065	100	320660655		
	60	0,070	100	32066066		



## Washer



Washer

(according to DIN EN-ISO 7089)

**Specification:**

reinforced washer with enlarged outer diameter, enlarged surface, improved pressure distribution

**Technical data:**

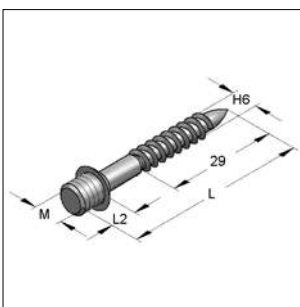
Material: steel  
Surface: galvanized<sup>1)</sup>

<sup>1)</sup> Components for outdoor application also available with Zinc-Nickel-coating (corrosion-protection class C3 acc. to ISO 9223). Delivery time on request!

Identification	Dimension d1 x d2 x S [mm]	DIN EN-ISO	Weight	Packing	Part-No.
			[kg/pc.]	[pcs.]	
<b>Washer</b>	<b>6,4 x 12,0 x 1,6</b>	7089	0,001	100	4320247
<b>Washer</b>	<b>8,4 x 16,0 x 1,6</b>	7089	0,002	100	4320255
<b>Washer</b>	<b>10,5 x 20,0 x 2,0</b>	7089	0,004	100	4320263
<b>Washer</b>	<b>13,0 x 24,0 x 2,5</b>	7089	0,007	100	4320271
<b>Reinforced washer</b>	<b>5,3 x 15,0 x 1,6</b>	7093-1	0,002	100	4330226
<b>Reinforced washer</b>	<b>6,4 x 18,0 x 1,6</b>	7093-1	0,003	100	4330242
<b>Reinforced washer</b>	<b>8,4 x 24,0 x 2,0</b>	7093-1	0,007	100	4330250
<b>Reinforced washer</b>	<b>10,5 x 30,0 x 2,5</b>	7093-1	0,013	100	4330269
<b>Reinforced washer</b>	<b>13,0 x 37,0 x 3,0</b>	7093-1	0,023	100	4330277
<b>Reinforced washer</b>	<b>17,0 x 50,0 x 3,0</b>	7093-1	0,041	100	4330285
<b>Reinforced washer</b>	<b>8,4 x 35,0 x 3,0</b>	-	0,022	100	4350847
<b>Reinforced washer</b>	<b>10,5 x 35,0 x 3,0</b>	-	0,021	100	4351053
<b>Reinforced washer</b>	<b>13,0 x 30,0 x 2,5</b>	-	0,012	100	4351282
<b>Reinforced washer</b>	<b>8,4 x 44,0 x 3,5</b>	-	0,041	100	4350850
<b>Reinforced washer</b>	<b>10,5 x 44,0 x 3,5</b>	-	0,040	100	4351059
<b>Reinforced washer</b>	<b>13,5 x 44,0 x 3,5</b>	-	0,038	100	4351344
<b>Reinforced washer</b>	<b>17,0 x 44,0 x 3,5</b>	-	0,036	100	4351744

05

## Bolt screw



Bolt screw

with wood- and metric thread

**Specification:**

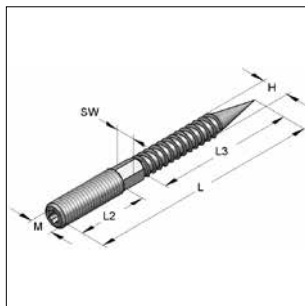
Version: with wood- and metric thread

**Technical data:**

Material: steel  
Surface: galvanized

Identification	Thread		L2 [mm]	Recommended anchor	Weight	Packing	Part-No.
	M	L [mm]			[kg/pc.]	[pcs.]	
<b>Bolt screw</b>	<b>M6</b>	<b>50</b>	7	8 x 40	0,008	100	3616053
<b>Bolt screw</b>	<b>M6</b>	<b>80</b>	7	8 x 40	0,013	100	3616088
<b>Bolt screw</b>	<b>M8</b>	<b>120</b>	7	10 x 50	0,028	100	3618129

## Hanger bolt



Hanger bolt  
multi-tooth TX 25

**Specification:**

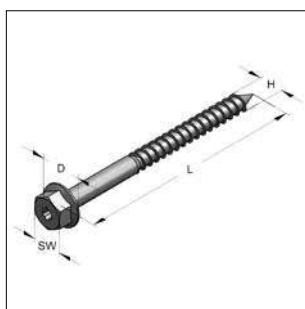
Version: with wood- and metric thread  
multi-tooth TX 25  
\* Specification without multi-tooth TX 25

**Technical data:**

Material: steel  
Surface: galvanized

Identification	Thread		H [mm]	L2 [mm]	L3 [mm]	Wrench size hexagon SW	Recomm. anchor	Weight [kg/pc.]	Packing [pcs.]	Part-No.
	M	L								
<b>Hanger bolt</b>	<b>M6</b>	<b>60*</b>	6,0	25	35	without	8x44	0,010	100	3600025
<b>Hanger bolt</b>	<b>M8</b>	<b>50</b>	6,7	13	35	without	10 x 44	0,011	100	3600032
<b>Hanger bolt</b>	<b>M8</b>	<b>60</b>	6,7	20	35	without	10 x 44	0,013	100	3600033
<b>Hanger bolt</b>	<b>M8</b>	<b>80</b>	6,7	32	35	6	10 x 60	0,019	100	3600041
<b>Hanger bolt</b>	<b>M8</b>	<b>100</b>	6,7	40	45	6	10 x 60	0,024	100	3600068
<b>Hanger bolt</b>	<b>M8</b>	<b>120</b>	6,7	50	45	6	10 x 60	0,029	100	3608123
<b>Hanger bolt</b>	<b>M8</b>	<b>140</b>	6,7	40	57	6	10 x 60	0,035	100	3608131
<b>Hanger bolt</b>	<b>M8</b>	<b>160</b>	6,7	40	57	6	10 x 60	0,043	100	3608166
<b>Hanger bolt</b>	<b>M10</b>	<b>60</b>	8,8	20	27	without	12 x 60	0,027	100	3609063
<b>Hanger bolt</b>	<b>M10</b>	<b>80</b>	8,8	20	45	8	12 x 60	0,029	100	3609081
<b>Hanger bolt</b>	<b>M10</b>	<b>100</b>	8,8	30	57	8	12 x 60	0,036	50	3609103
<b>Hanger bolt</b>	<b>M10</b>	<b>120</b>	8,8	40	57	8	12 x 60	0,046	50	3609138
<b>Hanger bolt</b>	<b>M10</b>	<b>140</b>	8,8	40	57	8	12 x 60	0,057	50	3609146
<b>Hanger bolt</b>	<b>M10</b>	<b>180</b>	8,9	40	57	8	12 x 60	0,076	50	3609189
<b>Hanger bolt</b>	<b>M12</b>	<b>100*</b>	10,3	22	57	10	14 x 80	0,054	50	3609510

## Wood screw with washer



Wood screw with washer

**Specification:**

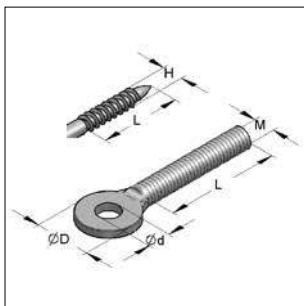
Version: with contact pressed washer

**Technical data:**

Material: steel  
Surface: galvanized

Identification	Thread		Wrench size SW	Torx drive	D x t [mm]	Recommended anchor K2	Weight [kg/pc.]	Packing [pcs.]	Part-No.
	H	L							
<b>Wood screw with washer</b>	<b>8</b>	<b>50</b>	13	-	25 x 1,5	10 x 44	0,022	100	3500012
<b>Wood screw with washer</b>	<b>8</b>	<b>60</b>	13	30	18 x 2,0	10 x 44	0,024	100	350002018
<b>Wood screw with washer</b>	<b>8</b>	<b>70</b>	13	30	18 x 2,0	10 x 60	0,025	100	350003918
<b>Wood screw with washer</b>	<b>8</b>	<b>80</b>	13	30	18 x 2,0	10 x 60	0,029	100	350004718
<b>Wood screw with washer</b>	<b>8</b>	<b>90</b>	13	30	18 x 2,0	10 x 60	0,033	100	350005518
<b>Wood screw with washer</b>	<b>8</b>	<b>100</b>	13	30	18 x 2,0	10 x 60	0,036	100	350006318

## ■ Eye screw



Eye screw

**Specification:**

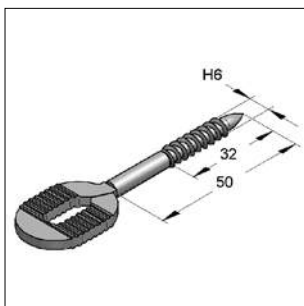
Version: with wood (H)- and metric (M) thread

**Technical data:**

Material: steel  
Surface: galvanized

Identification	Thread	L [mm]	Ø D [mm]	Ø d [mm]	Weight [kg/pc.]	Packing [pcs.]	Part-No.
<b>Eye screw</b>	<b>H6</b>	32	18	9,0	0,012	100	1180010
<b>Eye screw</b>	<b>M8</b>	20	21	8,5	0,015	100	1190059
<b>Eye screw</b>	<b>M10</b>	20	25	12,0	0,028	100	1190040
<b>Eye screw</b>	<b>M10</b>	45	25	12,0	0,044	100	1190032

## ■ Elongated hole screw



Elongated hole screw

**Specification:**

Version: with wood thread

**Technical data:**

Material: steel  
Surface: galvanized

Identification	Thread	Weight [kg/pc.]	Packing [pcs.]	Part-No.
<b>Elongated hole screw</b>	<b>H 6</b>	0,018	100	1140019

## Countersunk woodscrew



Countersunk woodscrew

**Specification:**

Version: Countersunk woodscrew with torx drive

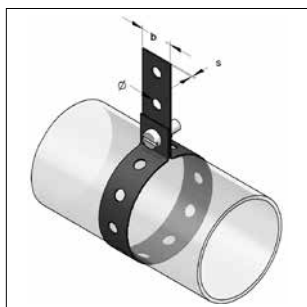
**Technical data:**

Material: steel  
Surface: galvanized

Identification	Dimension		Torx drive	Recommended anchor	Weight [kg/100]	Packing [pcs.]	Part-No.
	H [mm]	L [mm]					
Countersunk woodscrew	4,0	40	20	K2 5x25 K2 6x33	0,220	1000	372040040
Countersunk woodscrew	4,5	45	20	K2 6x33 K2 8x44	0,320	500	372045045
Countersunk woodscrew	5,0	50	25	K2 8x44	0,440	500	372050050
Countersunk woodscrew	6,0	60	30	K2 10x44 K2 10x60	0,750	200	372060060

05

## MEFA Plastahl



Mounting steel belt - PLASTAHL

**Specification:**

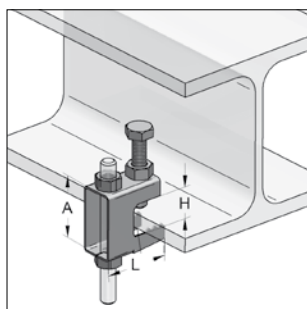
Application: suspension of round and squared channel ducts

**Technical data:**

max. load against breaking: determined safety factor 3

Identification	Dimension width	Steel band [mm]	OD [mm]	max. load [kN]	Delivery length [m]	Weight [kg/m]	Packing [m]	Part-No.
<b>PLASTAHL - plastic coated</b>	<b>27</b>	25 x 1,0	8,4	1,4	10	0,16	10	1100025
<b>Steel band, galvanized</b>	<b>17</b>	17 x 0,8	6,4	0,8	10	0,09	10	1110012
<b>Steel band, galvanized</b>	<b>25</b>	25 x 1,0	8,4	1,4	10	0,15	10	1110020

## ■ Girder clamp MKS



Girder clamp MKS



### Specification:

Application area: fast and simple mounting at steel structures and profiles

Variable height-adjustment: possible via hole  
possible via thread

Clamp bolt screw: stepless adjustment of different clamp bolt strengths

### Technical data:

Material: steel  
Surface: galvanized

\* only VdS approved

### With hole

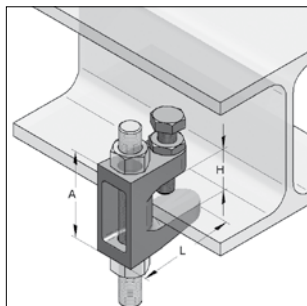
Identification	Thread	Borehole [mm]	L [mm]	A [mm]	H [mm]	max. load [kN]	Weight [kg/pc.]	Packing [pcs.]	Part-No.
<b>Girder clamp MKS 8*</b>	for M8	9	38	37	0-18	1,2	0,072	50	0576801
<b>Girder clamp MKS 10</b>	for M10	11	44	44	0-20	2,5	0,134	50	0576805
<b>Girder clamp MKS 12</b>	for M12	13	58	56	0-26	3,5	0,236	50	0576807

### With thread

<b>Girder clamp MKS 8*</b>	M8	-	32	37	0-18	1,2	0,072	50	0576802
<b>Girder clamp MKS 10</b>	M10	-	44	44	0-20	2,5	0,134	50	0576806
<b>Girder clamp MKS 12</b>	M12	-	58	56	0-26	3,5	0,236	50	0576808

mounting example see chapter 15

## Girder clamp, cast iron



Girder clamp, cast iron



G 400 0005  
G 403 0026  
G 491 0044



### Specification:

Application area: fast and simple mounting at steel structures and profiles  
 Variable height-adjustment: possible via hole possible via thread  
 Clamp bolt screw: stepless adjustment of different clamp bolt strengths  
 Brand: VS Guss

### Technical data:

Material: malleable cast iron  
 Surface: galvanized  
 Approval: VdS and FM (starting with M10) approved  
 1) VdS-approval number: G 400 0005  
 2) VdS-approval number: G 491 0044  
 3) VdS-approval number: G 403 0026

### With hole

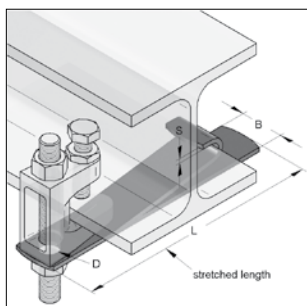
Identification	Thread	Borehole [mm]	L [mm]	A [mm]	H [mm]	max. load [kN]	Weight [kg/pc.]	Packing [pcs.]	Part-No.
Girder clamp TKN 8 <sup>1)</sup>	for M8	9	38	35	18	1,2	0,081	50	0579458
Girder clamp TKN 10 <sup>1)</sup>	for M10	11	44	42	20	2,5	0,143	50	0579460
Girder clamp TK 12 <sup>2)</sup>	for M12	13	58	54	26	3,5	0,216	50	0579462
Girder clamp TK 16 <sup>3)</sup>	for M16	17	58	58	28	5,5	0,318	50	0579448

### With thread

Girder clamp TKN 8 <sup>1)</sup>	M8	-	32	37	18	1,2	0,081	50	0579558
Girder clamp TKN 10 <sup>1)</sup>	M10	-	44	42	20	2,5	0,144	50	0579560
Girder clamp TK 12 <sup>2)</sup>	M12	-	58	54	26	3,5	0,216	50	0579562
Girder clamp TK 16 <sup>3)</sup>	M16	-	58	58	26	5,5	0,318	50	0579548

mounting example see chapter 15

## Safety lug



Safety lug

### Specification:

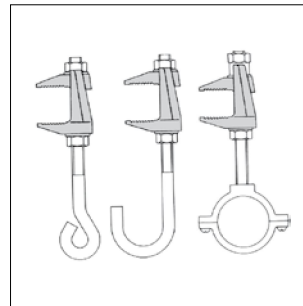
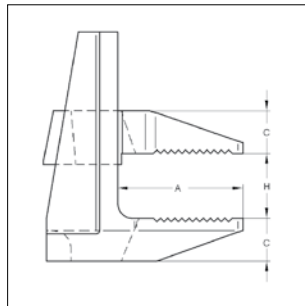
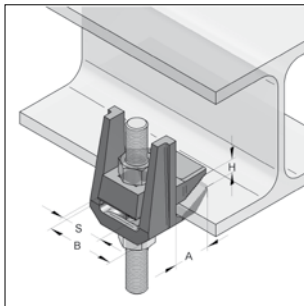
Application: for stationary sprinkler plant constructions according to VdS codes.  
 Recommended for pipes above 3"

### Technical data:

Material: steel  
 Material type: S235JR  
 Surface: galvanized

Identification	Type	for pipe	Drilling D [mm]	Material length x width x thickness [mm]	Weight [kg/pc.]	Packing [pcs.]	Part-No.
Safety lug	S 3	3" - 4"	10,5	300 x 25 x 3,0	0,177	50	0579303
Safety lug	S 5	5" - 6"	13,5	300 x 30 x 3,0	0,213	50	0579305
Safety lug	S 8	8"	17,0	300 x 45 x 3,0	0,319	50	0579308

## Girder clamp F3, two-part



Girder clamp F3  
two-part

**Specification:**

Application area: mounting of suspensions on steel girder up to 55 mm flange thickness  
 Mounting: mounting in combination with hexagon screws, threaded rods or carriage bolt (not included)

Brand: Lindapter

\* safety factor 4:1 against breaking

**Technical data:**

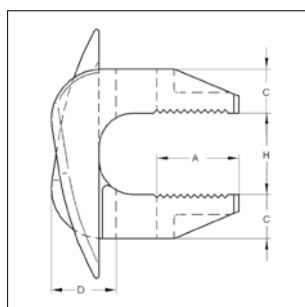
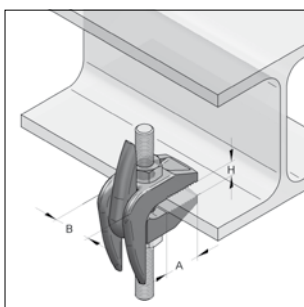
Material: malleable cast iron  
 Surface: hot-dip galvanized

Remark: Not suitable for disposed flanges

Identification	Type	Suited thread	max. load tensile* [kN]	Tightening torque (property class screw 4.6) [Nm]	Dimension					Weight [kg/pc.]	Packing [pc.]	Part-No.
					A [mm]	H [mm]	C [mm]	B [mm]	S [mm]			
<b>Girder clamp</b>	<b>F3/M8</b>	M8	0,90	6	20	0-25	8	33	19	0,091	1	0579613
<b>Girder clamp</b>	<b>F3/M10</b>	M10	1,20	20	25	0-30	10	38	22	0,150	1	0579625
<b>Girder clamp</b>	<b>F3/M12</b>	M12	2,00	39	35	0-40	12	49	29	0,301	1	0579637
<b>Girder clamp</b>	<b>F3/M16</b>	M16	4,00	93	46	0-55	16	60	36	0,610	1	0579649

05

## Girder clamp F9



Girder clamp F9

**Specification:**

Application area: mounting of strong walled steel girder up to 82 mm flange thickness.

Remark: Not suitable for disposed flanges

\* safety factor 5:1 against breaking

**Technical data:**

Material: malleable cast iron  
 Surface: galvanized

Identification	Type	max. load tensile* [kN]	Tightening torque (property class screw 4.6) [Nm]	Dimension					Weight [kg/pc.]	Packing [pc.]	Part-No.
				A [mm]	H [mm]	C [mm]	D [mm]	B [mm]			
<b>Girder clamp</b>	<b>F9/M10</b>	1,96	20,0	25	19-42	13	19	24	0,176	1	0579702
<b>Girder clamp</b>	<b>F9/M12</b>	2,80	39,0	35	26-60	17	24	30	0,430	1	0579703
<b>Girder clamp</b>	<b>F9/M16</b>	5,60	93,0	43	29-69	21	28	35	0,688	1	0579704
<b>Girder clamp</b>	<b>F9/M20</b>	8,40	177,0	51	32-82	25	35	44	1,134	1	0579705